



Queen Elizabeth College Enrolment Scheme

Effective from 1 January 2027

The guidelines for development and operation of enrolment schemes are issued under Schedule 20 of the Education and Training Act 2020 for the purpose of describing the basis on which the Secretary's powers in relation to enrolment schemes will be exercised.

Home Zones

Queen Elizabeth College operates separate home zones for enrolments at year 7-8 and for enrolments from year 9-13.

All students who live within the home zones described below and shown on the attached maps shall be entitled to enrol at the school. Both sides of each road are included in the zone unless otherwise stated.

Year 7 and 8 Home Zone

The home zone is described below in a generally clockwise direction.

1. The zone begins at the intersection of Rangitikei Line (SH3) and Flyers Line and follows Flyers Line northeast to its intersection with Gemini Avenue.
 - Addresses on Rangitikei Line (SH3) north of Flyers Line are not in zone.
 - Addresses on Flyers Line northeast of Gemini Avenue are not in zone.
2. From the intersection of Flyers Line and Gemini Avenue, the zone travels southeast, following Gemini Avenue, Apollo Parade, and Venus Way, to John F Kennedy Drive.
3. At the intersection of Venus Way and John F Kennedy Drive, the zone follows John F Kennedy Drive south to its intersection with Langley Avenue.
4. From John F Kennedy Drive, extending southeast to the rail corridor, the zone applies to properties west of Langley Avenue and Cambridge Street.
 - Properties on Langley Avenue and Cambridge Street themselves are not in zone.
5. At the rail corridor adjacent to the southern end of Cambridge Street, the zone travels in a straight line generally southwest to a point adjacent the intersection of Tremaine Avenue and Russell Street.
6. From Tremaine Avenue, extending south to Grey Street, the zone applies to properties west of Russell Street.
 - Properties on Russell Street itself are not in zone.
7. From the intersection of Russell Street and Grey Street, the zone travels west along Grey Street to its intersection with Rangitikei Line, and Walding Street.

8. From Rangitikei Line extending west to Bourke Street, the zone applies to addresses north of Walding Street.
 - Addresses on Walding Street itself are not in zone.
9. At the intersection of Walding Street and Bourke Street, the zone follows Bourke Street north to its intersection with Featherston Street.
 - Addresses on Bourke Street south of Walding Street are not in zone.
10. From the intersection of Bourke Street and Featherston Street, the zone follows Featherston Street west to its intersection with Kowhai Avenue.
 - Addresses on Waldergrave Street south to and including numbers 50 and 53 are in zone.
 - 136 Featherston Street, and addresses on Oakley Street are in zone.
11. From Kowhai Avenue west to Seddon Street, the zone applies to properties north of Featherston Street.
 - Properties on Featherston Street within this section are not in zone.
12. From Featherston Street north to Tremain Avenue, the zone applies to properties east of Seddon Street.
 - Properties on Seddon Street itself are not in zone.
13. From the intersection of Seddon Street and Tremain Avenue, the zone follows the Mangaone Stream north to a point adjacent to the southern end of Willowstream Grove.
14. At the southern end of Willowstream Grove, the zone travels north along Willowstream Grove, then along Bendigo Street, to its intersection with Benmore Avenue.
 - Addresses on Geraldine Crescent, Raglan Avenue, and Herbert Avenue are not in zone.
15. From the intersection of Bendigo Street and Benmore Avenue, the zone travels east along Benmore Avenue and then Meadowbrook Drive to a point adjacent to Rangitikei Line (SH3).
16. From Rangitikei Line at the eastern end of Meadowbrook Drive, the zone travels north along Rangitikei Line (SH3), returning to the starting point at the intersection with Flyers Line.
 - Addresses in future housing developments accessible from Benmore Avenue or Rangitikei Line (SH3) and located within the described boundary will be in zone.



Year 9 – 13 Home Zone

The home zone is described below in a generally clockwise direction.

1. The zone begins at the intersection of Kellow Road, Hammond Road, and Rongotea Road, and follows Rongotea Road southeast to the intersection of Rongotea Road, Lockwood Road, and Oroua Road.
 - No addresses on Kellow Road or Hammond Road are in zone.
 - All addresses in the Rongotea township, up to and including 424 and 433 Waitohi Road to the north, are in zone.
 - Addresses on Cole Road and Mill Road are not in zone.
 - On Green Road, only addresses numbered 478 and 480 are in zone.
2. From the intersection of Rongotea Road, Lockwood Road, and Oroua Road, the zone travels north on Oroua Road to its intersection with Rangitikei Line (SH3).
3. At the intersection of Oroua Road and Rangitikei Line (SH3), the zone travels south along Rangitikei Line to its intersection with Hansens Line.
 - Addresses on Rangitikei Line south of the Oroua River are in zone.
 - All addresses on Daltons Road are in zone.
4. From the intersection of Rangitikei Line and Hansens Line, the zone follows Hansens Line to its intersection with Te Arakura Road.
 - All addresses on Te Arakura Road are in zone.
5. At the intersection of Hansens Line and Te Arakura Road, the zone follows Te Arakura Road south to its intersection with Milson Line (SH54).
 - Addresses on Lawton Road are in zone.
 - Addresses on Camerons Line (SH54) north of Te Arakura Road are not in zone.
6. From the intersection of Te Arakura Road and Milson Line (SH54), the zone follows Milson Line (SH54) south to its intersection with Flyers Line.
 - Addresses on Newbury Line, Kairanga Bunnythorpe Road, and Richardsons Line, up to their intersections with Roberts Line, are in zone.
 - Addresses on Roberts Line are not in zone.
7. From Flyers Line, extending southeast to the rail corridor, the zone applies to properties west of Milson Line.
 - Addresses on Milson Line and Bethel Court are not in zone.
8. From the rail corridor adjacent to the southern end of Milson Line, the zone travels in a straight line generally southwest to the intersection of Tremaine Avenue and Heretaunga Street.
9. From Tremaine Avenue, extending southeast to Featherston Street, the zone includes addresses west of Heretaunga Street.
 - Addresses on Heretaunga Street itself are not in zone.



Erin Moriarty
Manager, Integrated Services
Taranaki, Whanganui, Manawatū
24 June 2026

10. At the intersection of Heretaunga Street and Featherston Street, the zone travels west on Featherston Street to its intersection with Albert Street.
11. From the intersection of Featherston Street and Albert Street, the zone follows Albert Street south to its intersection with College Street.
12. From Albert Street, extending west to Fitzherbert Avenue, the zone applies to properties north of College Street.
 - Addresses on College Street itself are not in zone.
13. From the intersection of College Street and Fitzherbert Avenue, the zone travels north on Fitzherbert Avenue to its intersection with Ferguson Street
 - Addresses on Chaytor Street are not in zone.
14. From the intersection of Fitzherbert Avenue and Ferguson Street, the zone follows Ferguson Street west to its intersection with Cook Street.
15. At the intersection of Ferguson Street and Cook Street, the zone travels north on Cook Street to its intersection with Cuba Street.
16. From the intersection of Cook Street and Cuba Street, the zone travels west on Cuba Street to its intersection with Pascal Street.
17. At the intersection of Cuba Street and Pascal Street, the zone follows Pascal Street north to its intersection with Featherston Street.
 - Addresses on Arena Court are in zone.
 - Addresses on Chelwood Street between Pascal Street and Bryant Street are in zone.
18. From the intersection of Pascal Street and Featherston Street, the zone travels west on Featherston Street to its intersection with Botanical Road.
 - Properties south of Featherston Street and north of Chelwood Street are in zone, including the relevant sections of Bryant Street, Lyndhurst Street, Kingswood Street, and Shamrock Street.
 - Addresses on Chelwood Street west of Bryant Street are not in zone.
19. At the intersection of Featherston Street and Botanical Road, the zone travels north on Botanical Road to the Mangaone Stream.
 - Addresses on Coventry Street and Hull Place are in zone.
20. From the confluence of Botanical Road and the Mangaone Stream, the zone follows the Mangaone Stream southwest to a point adjacent to the southern end of White Horse Drive.
21. From the southern end of White Horse Drive, the zone follows White Horse Drive, then Anders Road north, to the intersection of Anders Road and Number 1 Line, Longburn.

22. From the intersection of Anders Road and Number 1 Line, Longburn, the zone follows Number 1 Line, Longburn west to its intersection with Karere Road.
 - All addresses on Number 1 Line, Longburn, including those addresses west of Karere Road, are in zone.
23. At the intersection of Number 1 Line, Longburn and Karere Road, the zone follows Karere Road north to its intersection with Kairanga Bunnythorpe Road and Lockwood Road.
24. From the intersection of Karere Road, Kairanga Bunnythorpe Road, and Lockwood Road, the zone follows Lockwood Road west to its intersection with Hoihere Road.
25. At the intersection of Lockwood Road and Hoihere Road, the zone follows Hoihere Road west to its intersection with Main Drain Road.
26. From the intersection of Hoihere Road and Main Drain Road, the zone follows Main Drain Road north to its intersection with Couper Road, Milner Road, and Sansons Road (Glen Oroua).
 - Addresses on Mangawhata Road and Taikorea Road between Main Drain Road and Pykes Road are in zone.
 - Addresses on Pykes Road are not in zone.
27. At the intersection of Main Drain Road, Couper Road, Milner Road, and Sansons Road, the zone follows Sansons Road north to its intersection with Kaimatarau Road.
 - Addresses south on Couper Road, up to and including numbers 35 and 60, are in zone.
 - Addresses west on Milner Road, up to and including numbers 514 and 517, are in zone.
28. From the intersection of Sansons Road and Kaimatarau Road, the zone follows Kaimatarau Road west to its intersection with Banks Road.
 - Addresses on Kaimatarau Road between Banks Road and Kellow Road are in zone.
 - Addresses on Kellow Road are not in zone.
29. At the intersection of Kaimatarau Road and Banks Road, the zone follows Banks Road north to its intersection with Thames Street, Rongotea.
 - No exit roads west of Banks Road, including Crown Lane, Stirling Lane, and Florin Lane, are in zone.
30. From the intersection of Banks Road and Thames Street, the zone follows Thames Street and then Rongotea Road to return to the starting point at the intersection of Rongotea Road, Kellow Road, and Hammond Road.

In-Zone Enrolments

Proof of residence within the home zone may be required.

Each year applications for enrolment in the following year from in-zone students will be sought by a date which will be published by notice in a media suitable for the local community. This will enable the school board to assess the number of places which can be made available to students who live outside the home zone. *(This paragraph is optional)*

Out of Zone Enrolments (updated to new Act)

Each year the board will determine the number of places, and the number of pre-enrolment periods, which are likely to be available in the following year for the enrolment of students who live outside the home zone. The school board will publish this information by notice in a media suitable for the school and wider local community. The notice will indicate how applications are to be made, the date by which all applications must be received, and the date any ballot will be held.

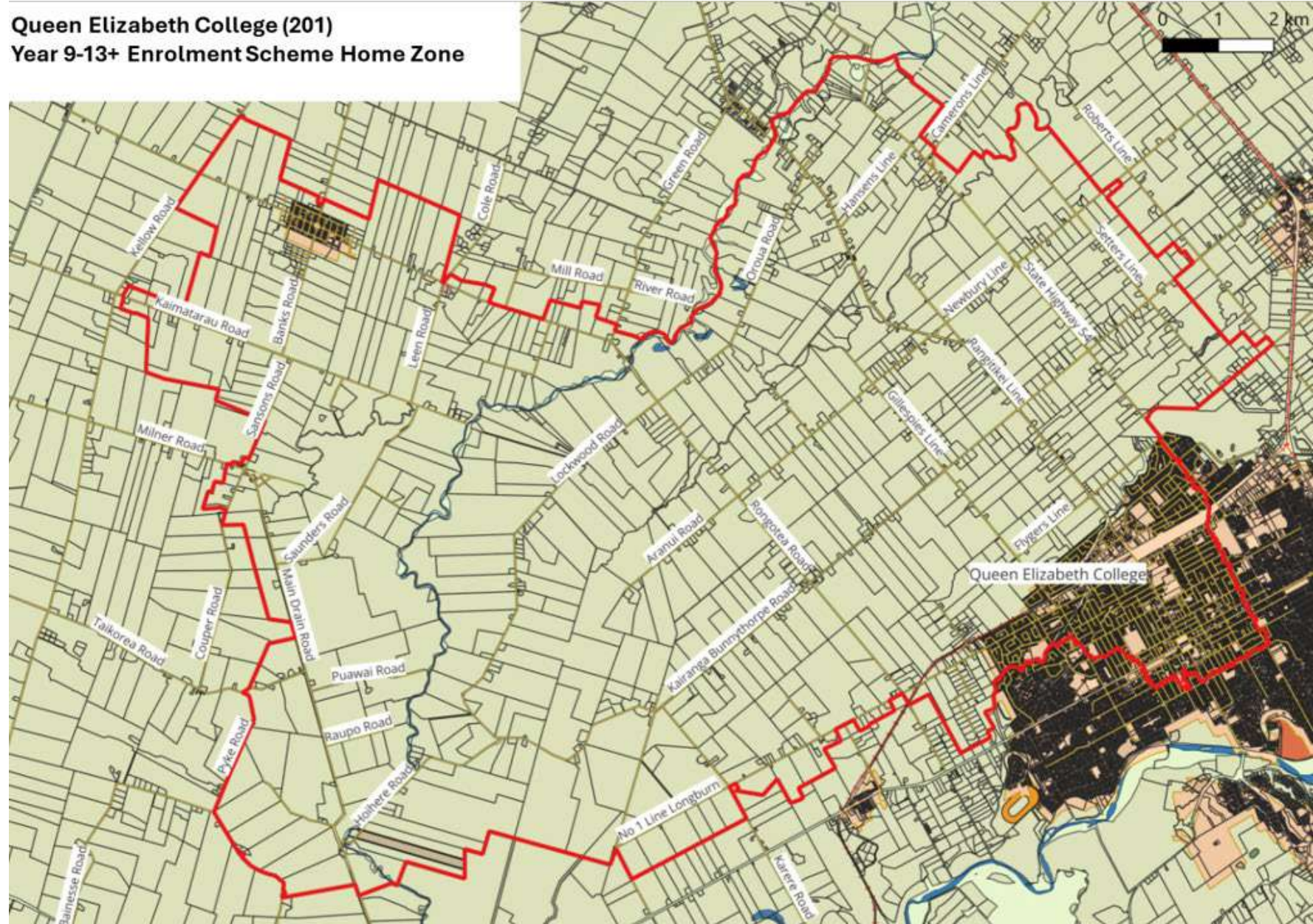
Applications for enrolment will be processed in the following order of priority, according to legislation:

- First Priority** *This priority category is not applicable to this school as it does not operate a special programme approved by the Secretary of Education.*
- Second Priority** will be given to applicants who are siblings of current students.
- Third Priority** will be given to applicants who are siblings of former students.
- Fourth Priority** will be given to any applicant who is a child of a former student of the school.
- Fifth Priority** will be given to any applicant who is either a child of an employee of the board of the school or a child of a member of the board of the school.
- Sixth Priority** will be given to all other applicants.

Note: Applicants seeking second or third priority status may be required to give proof of a sibling relationship.

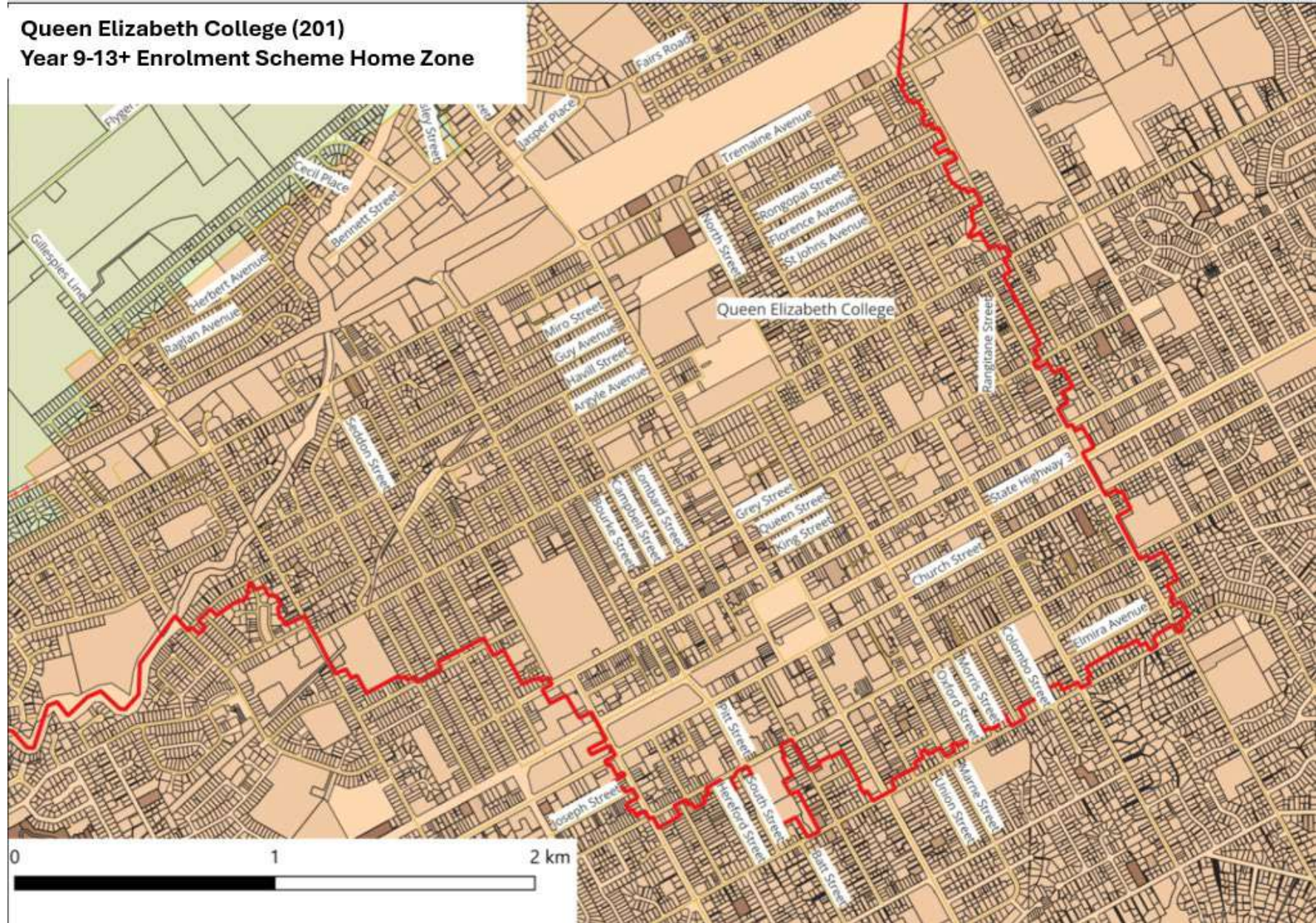
If there are more applicants in the second, third, fourth, fifth or sixth priority groups than there are places available, selection within the priority group will be by a ballot conducted in accordance with instructions issued by the Secretary under Clause 3 Schedule 20 of the Education and Training Act 2020.

**Queen Elizabeth College (201)
Year 9-13+ Enrolment Scheme Home Zone**



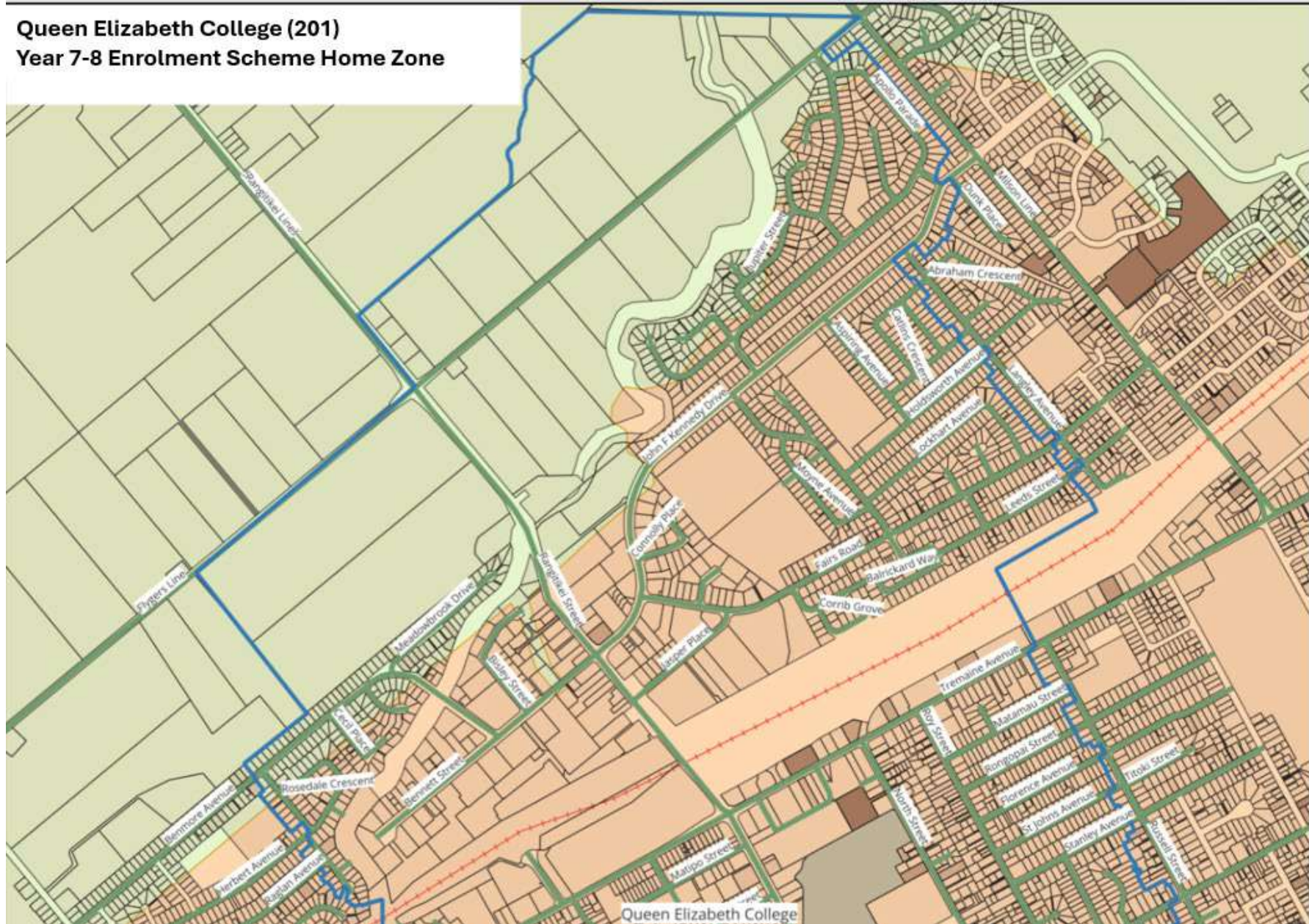
Erin Moriarty
Erin Moriarty
Manager, Integrated Services
Taranaki, Whanganui, Manawatu
24 June 2026

Queen Elizabeth College (201)
Year 9-13+ Enrolment Scheme Home Zone



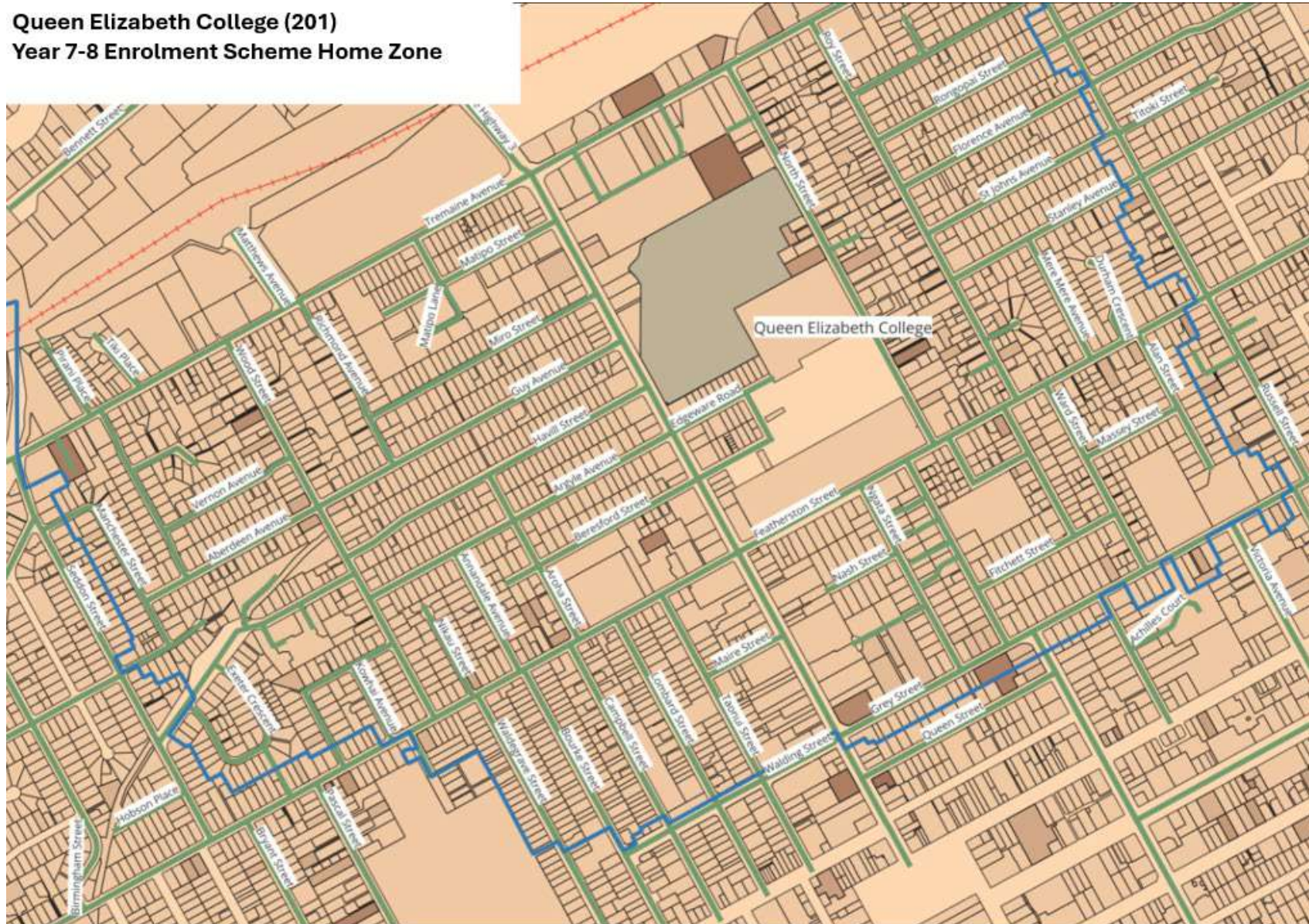
Erin
Erin Moriarty
Manager, Integrated Services
Taranaki, Whanganui, Manawatu
24 June 2026

Queen Elizabeth College (201)
Year 7-8 Enrolment Scheme Home Zone



Erin
Erin Moriarty
Manager, Integrated Services
Taranaki, Whanganui, Manawatu
24 June 2026

Queen Elizabeth College (201)
Year 7-8 Enrolment Scheme Home Zone



Erin
Erin Moriarty
Manager, Integrated Services
Taranaki, Whanganui, Manawatu
24 June 2026